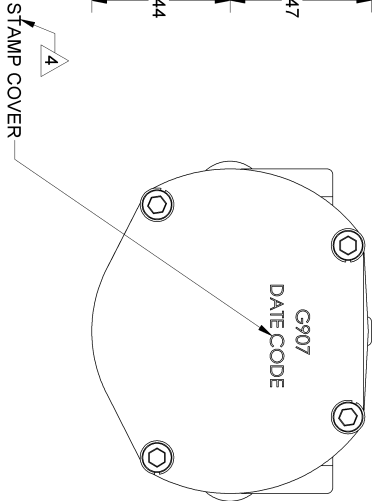
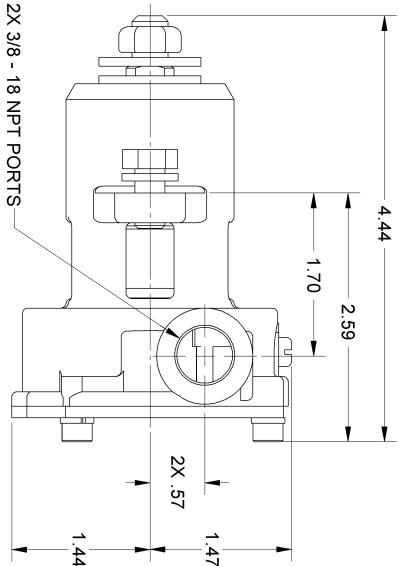
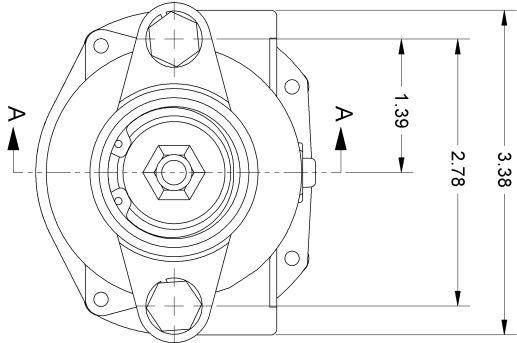
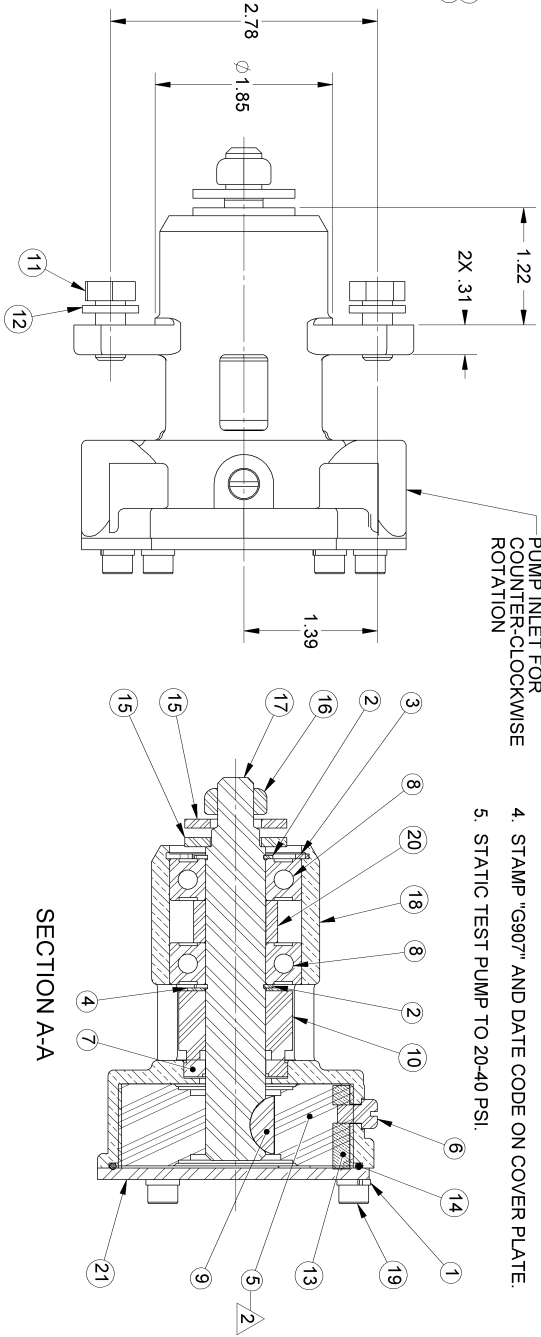


ASSEMBLY NOTES:

1. APPLY PERMATEX FORM-A GASKET NO. 1 (HARD SETTING) SEALANT OR EQUIV. TO THREADS AND BASE OF HEAD TO CAM SCREW PRIOR TO INSTALLATION.
2. USE COOLANT TO AID IN INSTALLATION OF RUBBER IMPELLER.
3. USE PAC-EASE OR EQUIV. WHEN INSTALLING MECHANICAL SEAL.
4. STAMP "G907" AND DATE CODE ON COVER PLATE.
5. STATIC TEST PUMP TO 20-40 PSI.

ITEM NO.	PART NUMBER	DESCRIPTION	QTY.
1	00343	LOCK WASHER	4
2	4258	RETAINING RING	2
3	4259	RETAINING RING	1
4	04264	FLAT WASHER	1
5	9000	RUBBER IMPELLER	1
6	10195	CAM SCREW	1
7	10926	SEAL SEAT	1
8	12211	BALL BEARING	2
9	18576	KEY, WOODRUFF	1
10	18035	MECHANICAL SEAL	1
11	18573	CAP SCREW	2
12	18574	LOCK WASHER	2
13	18653	CAM	1
14	19964	O-RING	1
15	21857	FLAT WASHER	2
16	21858	NUT	1
17	21861	SHAFT	1
18	21862	HOUSING	1
19	21916	SOCKET HD CAP SCREW	4
20	21974	SPACER	1
21	24125	COVER PLATE	1



FORM IN-0028 REV.

REV.	ECN	REVISION DESCRIPTION	CHD	DATE	PART DESCRIPTION	EXPENDITURAL PART NO.	REV.
G	5987	REVISED NOTE 2 TO USE "COOLANT"	DV	11-13-06			
F	5817	18576 KEY WAS 13777	DV	08-07-06			
E	5158	CHG NUT TO 21858, ADDED WASHER 21857	RUE	08-27-05			
D	4907	ADDED BALL BEARING 12211, REMOVED 23448	RUE	08-04-05			
C	4810	NUT WAS 21858, ADDED 24126 LOCK WASHER	DV	04-12-05			
B	3754	COVER 24125 WAS 19965	DV	10-28-03			
A	1995	UPDATED BOM & REDRAWN	DV	08-27-02			

HYPRO	375 Fifth Avenue NW New Brighton, MN 55112 (651) 766-5300	DATE: 11-07-94
THIRD ANGLE PROJECTION	SCALE: 1 : 1	DATE: 11-07-94
IMPELLER PUMP	G907	